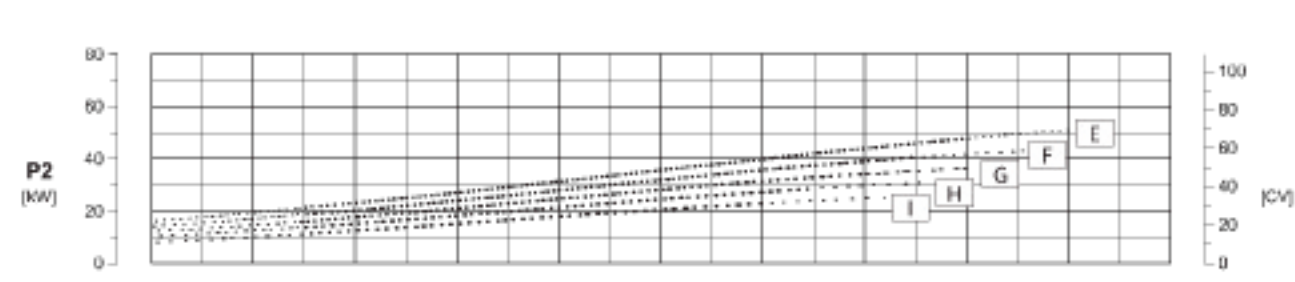
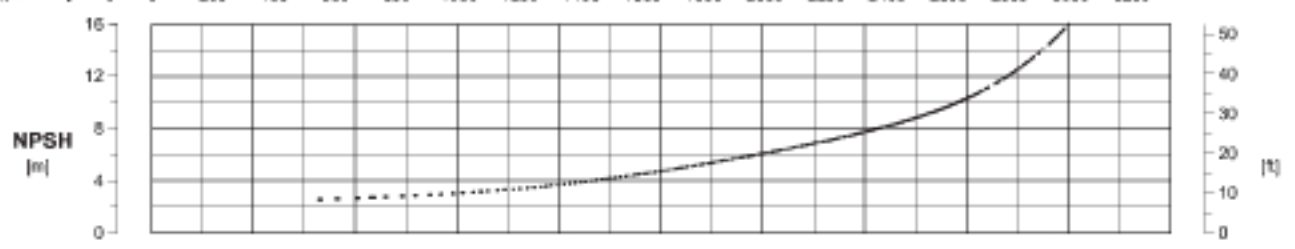
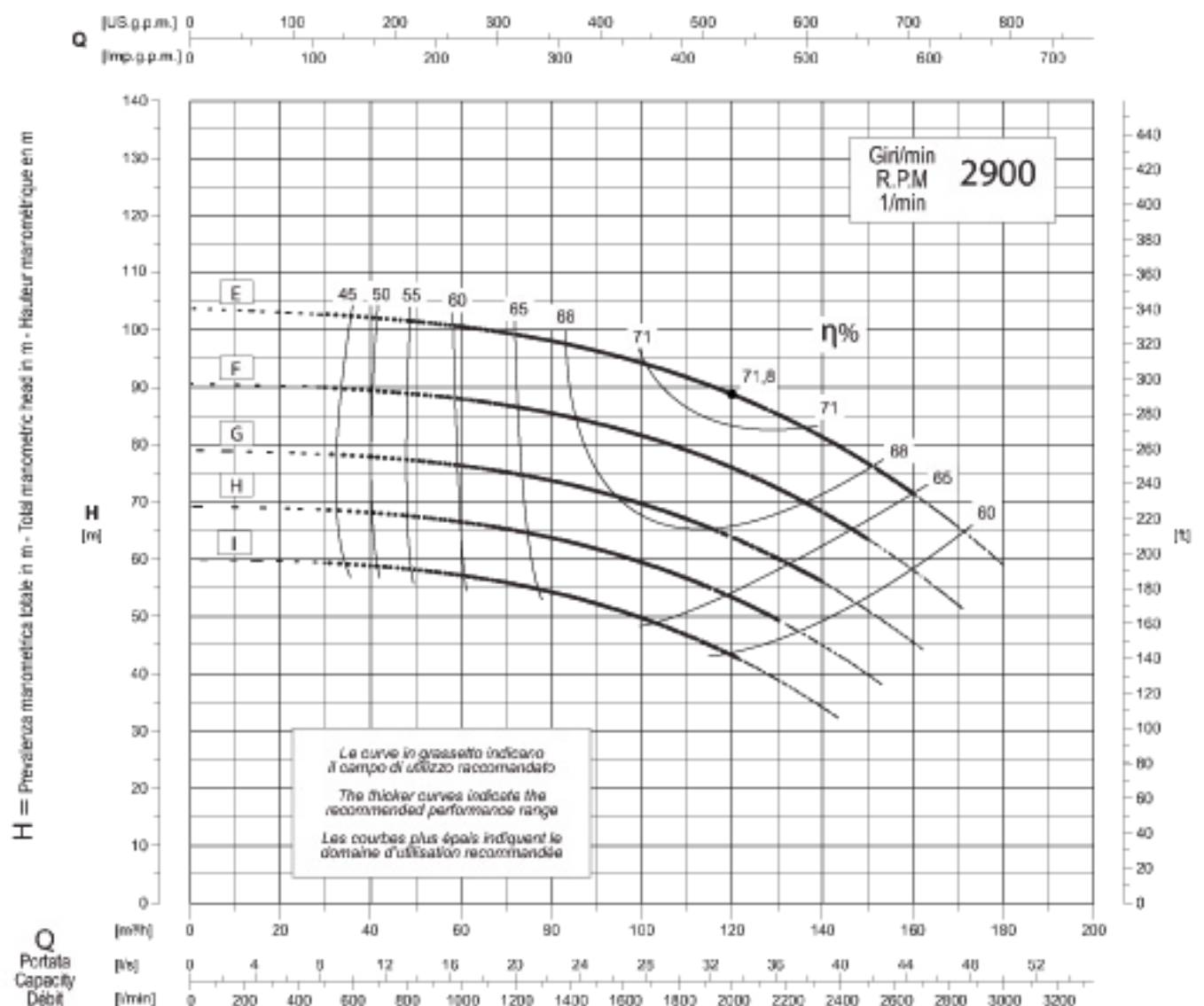


Caratteristiche - Performances - Caractéristiques

Pompa tipo **S3NR65-250** Aspir. X Mand.
 Pump type **S3NR65-250** Inlet X Outlet **80 x 65**
 Pompe type Aspir. X Refoul.



η% Rendimento della pompa
 Pump efficiency
 Rendement de la pompe

Tolleranze:
9906 Annex A
 Tolerances:

Curve per liquidi aventi densità 1000 kg/m³ - viscosità 1 mm²/s alla temperatura di 20°C
 Curves established for liquids density 1000 kg/m³ - viscosity 1 mm²/s - temperature 20°C
 Courbes établies pour liquides densité 1000 kg/m³ - viscosité 1 mm²/s - température 20°C

Possibile aggiornamento senza preavviso - Revision possible without prior notice - Mise à jour éventuelle sans préavis